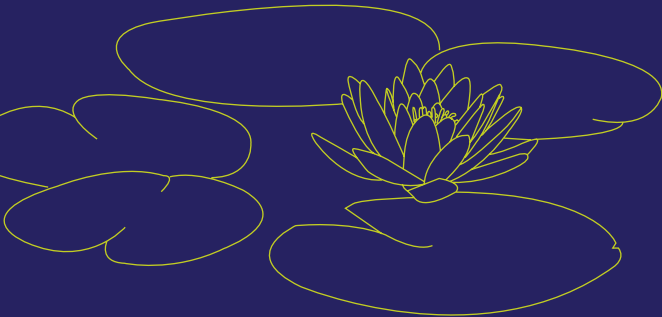
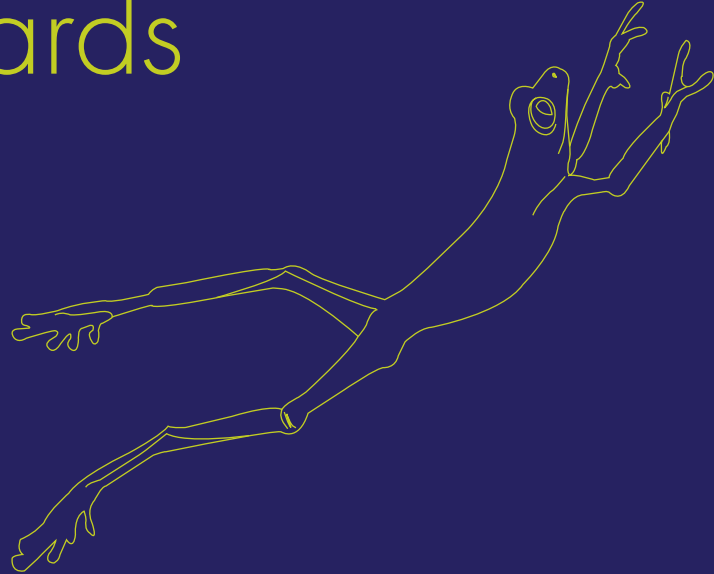


London Education Partnership Awards

Rewarding partnerships,
raising aspirations



APPLICATION **2010**

Purpose of the awards



The London Education Partnership Awards recognise and build on a well-established tradition among London's education providers in offering higher education opportunities to a wide range of learners raising the aspirations of young people to help them achieve their full potential. This tradition ensures that growing numbers of London learners benefit from the extraordinary range and richness of the capital's education institutions and can contribute to and benefit from the unique wider wealth creation that London offers.

The awards incorporate and reflect the principles that have distinguished best practice to date and are designed to:



Recognise and continually refine standards of excellence and practice

Reward innovation and entrepreneurship

Recognise the impact of education partnerships on progression and achievement



Eligibility

Entry arrangements

Eligibility

Any education institution in the Greater London area (the 33 local authorities).

Employers and third sector/ community organisations supporting activities that benefit young people or adults in the area.

Awards may be given to individual schools, sixth-form and further education colleges, higher education institutions, third sector/ community sector organisations and employers or partnerships.

If a partnership is covered by more than one category, organisations may submit applications in each of the appropriate categories.

All entries must demonstrate how they meet the specific criteria set out in the relevant award categories.

An individual or institution may enter their own work or nominate someone else's.

Entry arrangements

Applications for the London Education Partnership Awards 2010 should be made via the awards website at:

www.lepawards.org.uk by 5.00pm on Friday 2 April 2010.

We encourage all entrants to make good and effective use of the guidance notes. These can be found on the awards website.

Award categories

Judging

Award categories

- Building bridges: cross-organisational partnership and impact
- Supporting journeys: excellent professional practice in student support
- Inspiring journeys: excellent professional practice in curriculum support for STEM
- Creative journeys: excellent professional practice in curriculum support for arts and design
- Driving achievement forward: achieving successful outcomes post-16
- Reaching out: third sector/voluntary sector organisation of the year
- Investing in the future: business employer of the year
- Starting the journey: raising aspirations in primary school pupils

Judging

A team with relevant expertise will carry out an initial assessment of applications against the stated criteria and draw up a shortlist for each award category. The judging panel will then choose the winners from the shortlist. The awards ceremony will take place in London in June 2010.

Criteria for individual awards

Building bridges:

cross-organisational partnership and impact

Sponsor: Mayor of London

Judges will be looking for partnerships that can demonstrate:

- A strategic and systematic approach to school/further/higher education progression
- Effective cross-organisational curriculum partnerships, including joint programme planning and delivery
- Widened participation for non-traditional higher education entrants
- Evidence of progress, outcomes and impact against baseline position over a minimum two-year period

Supporting journeys:

excellent professional practice in student support

Sponsor: Specialist Schools and Academies Trust

Judges will be looking for partnerships that can demonstrate:

- Innovative or inspiring curriculum practice in a specific subject area or areas
- Joint curriculum planning, delivery and review to support progression
- Cross-organisational teaching and learning relationships and professional development
- Specialist information, advice and guidance, mentoring and student support
- Widened participation for non-traditional higher education entrants
- Evidence of progress, outcomes and impact against baseline position over a minimum two-year period

Inspiring journeys:

excellent professional practice in curriculum support for STEM

Sponsor: The Wellcome Trust

Judges will be looking for partnerships that can demonstrate:

- Innovative or inspiring curriculum practice in one or more of the STEM subject areas
- Joint curriculum planning, delivery and review to support progression
- Cross-organisational teaching and learning relationships and professional development
- Specialist information, advice and guidance, mentoring and student support
- Widened participation for non-traditional higher education entrants
- Evidence of progress, outcomes and impact against baseline position over a minimum two-year period

Creative journeys:

excellent professional practice in curriculum support for arts and design

Sponsor: University of the Arts London

Judges will be looking for partnerships that can demonstrate:

- Innovative or inspiring curriculum practice in one or more of the subject areas
- Joint curriculum planning, delivery and review to support progression
- Cross-organisational teaching and learning relationships and professional development
- Specialist information, advice and guidance, mentoring and student support
- Widened participation for non-traditional higher education entrants
- Evidence of progress, outcomes and impact against baseline position over a minimum two-year period

Driving achievement forward: achieving successful outcomes post-16

Sponsor: London Thames Gateway Development Corporation

Judges will be looking for programmes and partnerships that produce successful outcomes and progression for young people at the end of level 2 courses aged 16+ and that can demonstrate:

- Local progression planning between schools and colleges
- Innovation and breadth in curriculum design, delivery and assessment at level 2
- Support and guidance for students that enable them to secure progression and prepare them to succeed at the next level
- Effective relationships with employers, level 3 programmes further and higher education
- Evidence of progress, outcomes and impact against baseline position over a minimum two-year period

Reaching out: third/voluntary sector organisation of the year

Sponsor: The National Institute for Adult Continuing Education (NIACE)

Judges will be looking for organisations that can demonstrate:

- How they are achieving their purpose through partnership
- How their organisation's structures and ways of working contribute to partnerships and make a difference to learners
- How their organisation has changed attitudes, behaviours and practice
- Evidence of outcomes and impact over a minimum two-year period

Investing in the future: business employer of the year

Sponsor: London First

Judges will be looking for organisations that can demonstrate:

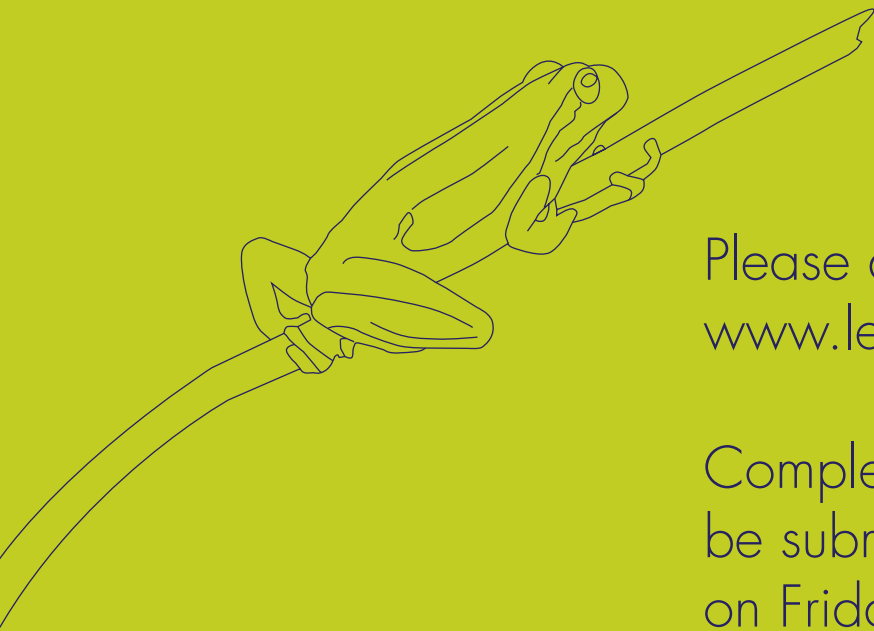
- Strong corporate leadership and mission in education partnerships to achieve social and business benefits
- Evidence of outcomes and impact over a minimum two-year period
- Effective investment of company resources in promoting aspiration and progression among young people and adults
- Innovative strategies to develop the talent and employability of young people and adults
- Innovative strategies to increase access to and widen participation of under-represented and excluded groups in employment and higher education

Starting the journey: raising aspirations in primary school pupils

Sponsor: Museum of London

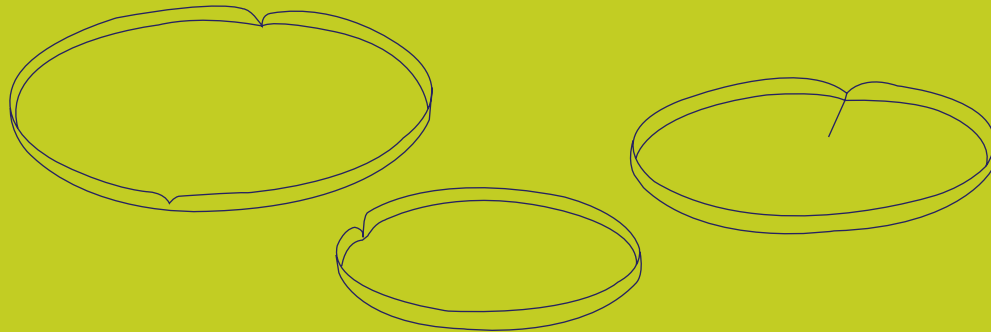
Judges for this new award will be looking for partnerships, including any organisation from the education, community or business sector, that:

- Develop innovative projects that challenge low aspirations and stereotypical thinking in primary aged children in order to maximise their potential
- Work with primary schools to broaden children's horizons
- Raise awareness of their options for the future
- Work particularly to draw in the families and teachers of the children involved



Please apply online at
www.lepawards.org.uk

Completed applications should
be submitted no later than 5.00pm
on Friday 2 April 2010





Contact details:

London Education Partnership Awards
The Institute of Education
University of London
20 Bedford Way
London WC1H 0AL

Telephone: 020 7612 6313
Email: lepawards@ioe.ac.uk
www.lepawards.org.uk



London Education Partnership Awards



Leading education
and social research
Institute of Education
University of London



Specialist Schools
and Academies Trust
THE SCHOOLS NETWORK™

University of the
Arts London



London First

MAYOR OF LONDON

niace
promoting adult learning



welcome trust



Recycled

Supporting responsible use
of forest resources

www.fsc.org Cert no. TT-COC-002571
© 1996 Forest Stewardship Council

